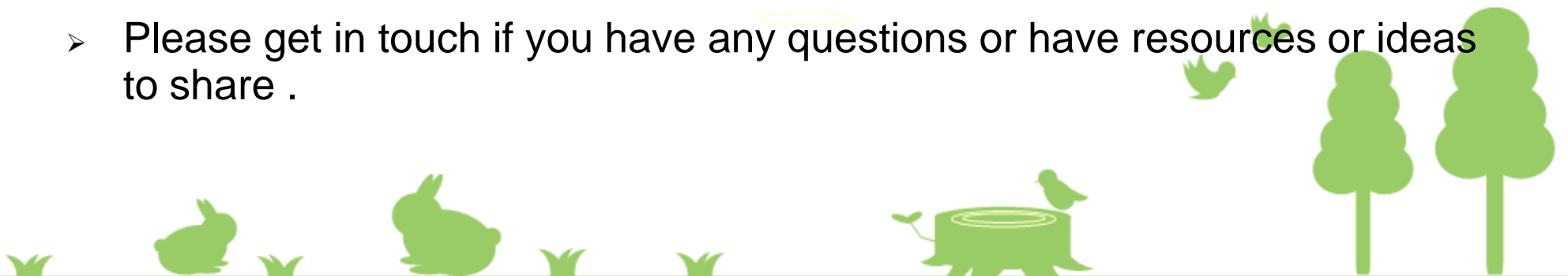


Stepping Up

- The RCPCH Stepping Up programme supports the five year period from RCPCH Start (Specialty Trainee 7+) to the end of year three consultancy.
- The reality of working as a consultant is vastly different to working as a supported senior trainee. The aim is to support trainees to develop skills for transitioning to a consultant role.
- Within the West Midlands region, Dr Amy Walker (Stepping Up Champion) and the Stepping Up committee will aim to help prepare senior trainees along with new consultants for this transition by organising webinars, setting up mentoring and sharing resources.
- Please get in touch if you have any questions or have resources or ideas to share .



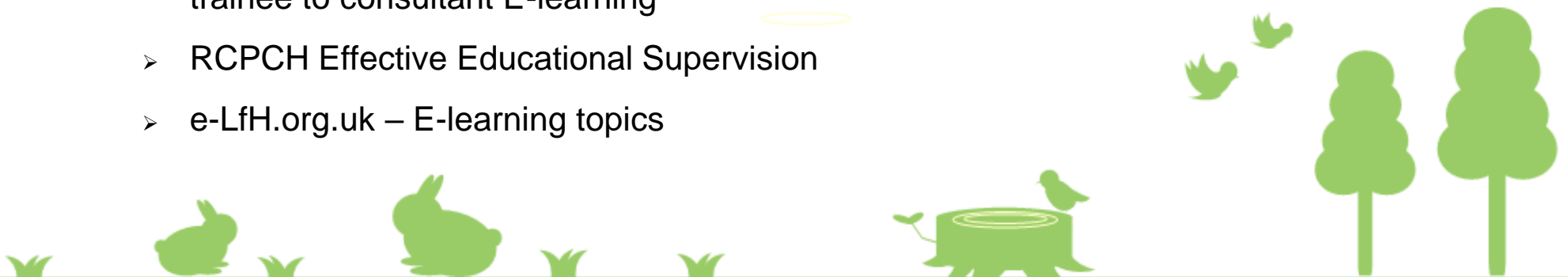
Stepping Up

➤ **Upcoming Events:**

- **Stepping Up Webinar Coming Soon**– ‘Managing Complaints’ and ‘Consultant Contracts/PAs’
- Coming soon: Stepping Up Mentorship Programme

➤ **Useful Courses:**

- Keele University Clinical Leadership and Management Course
- Royal College of Physicians Consultant Development Programme – available for non physicians
- <https://new-learning.bmj.com/course/10035773> - Managing your transition from speciality trainee to consultant E-learning
- RCPCH Effective Educational Supervision
- e-LfH.org.uk – E-learning topics



Stepping Up

➤ Useful Resources:

- www.medical-interviews.co.uk – Medical Interview Questions and Resources
- <https://www.bmj.com/content/370/bmj.m3677> - How can I smoothly transition from trainee to consultant

➤ Contact Us:

- Stepping Up West Midlands Whats App Group
- rcpchsteppingupwestmids@gmail.com
- **Dr Amy Walker** – Stepping Up Champion – amywalker@nhs.net
- **Dr Anna Ratcliffe** (ST8) – anna.ratcliffe2@nhs.net
- **Dr Clare Morgans** (ST8) – cmorgans@nhs.net
- **Dr Shaheen Ghumra** (ST8) – shaheen.ghumra@nhs.net

